

ELECTRICITY MONITOR SYSTEM

WIRELESS

MTP 3100

ELECTRICITY CONSUMPTION MONITOR



FC IC ETL CE

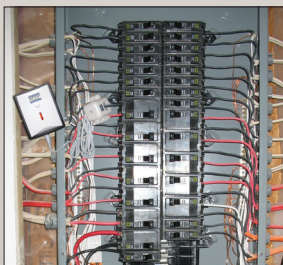
WIRELESS SIGNAL



TRANSMITTER TO MONITOR



Installation on a standard 200A panel (for total house consumption)



Determine consumption on a circuit of an electrical panel

Measures / Displays :

- | | |
|----------------------------|-----------------------|
| • Instant energy (kW) | • Energy tendency |
| • Energy consumption (kWh) | • Ambient temperature |
| • Total cost (\$ value) | • Relative humidity |
| • Pollution (Kg CO2) | • Time/ date |
| • Averages | • Battery status |

Tariff Rates : Two tariff setting modes

- Time of Use (TOU) tariff
- Normal Meter Pricing (NMP)

History : Retrieve past information directly from the monitor

Alarm setting : For max. energy consumption

Monitor :

- Backlight
- Power source : batteries & power supply

Transmitter :

- Works on a single to **three phase system** (3rd clamp sold separately)
- Transmission distance : 30 to 80 meters
- All clamps are removable from transmitter
- Clamp : 18mm dia., suitable for installation on a standard 200A panel
- Power source: batteries x02 'C' batteries included
- Works on systems 90V to 600

Software : Software included

INCLUDED ACCESSORIES:

Monitor, transmitter
x02 clamps 200A/18mm
RJ45-USB data cable
power supply
manual
software
x02 C batteries



OPTIONAL ACCESSORIES:



***MT3100-CL18MM**
200A/18mm clamp



***MT3100-T25MM**
200A/25mm clamp with transmitter



***MT3100-CL25MM**
200A/25mm clamp

For setup instructions, visit us on
YouTube. **MTP Instruments Inc.**



WWW.MTPINC.COM • INFO@MTPINC.COM

LES INSTRUMENTS
MTP
INSTRUMENTS